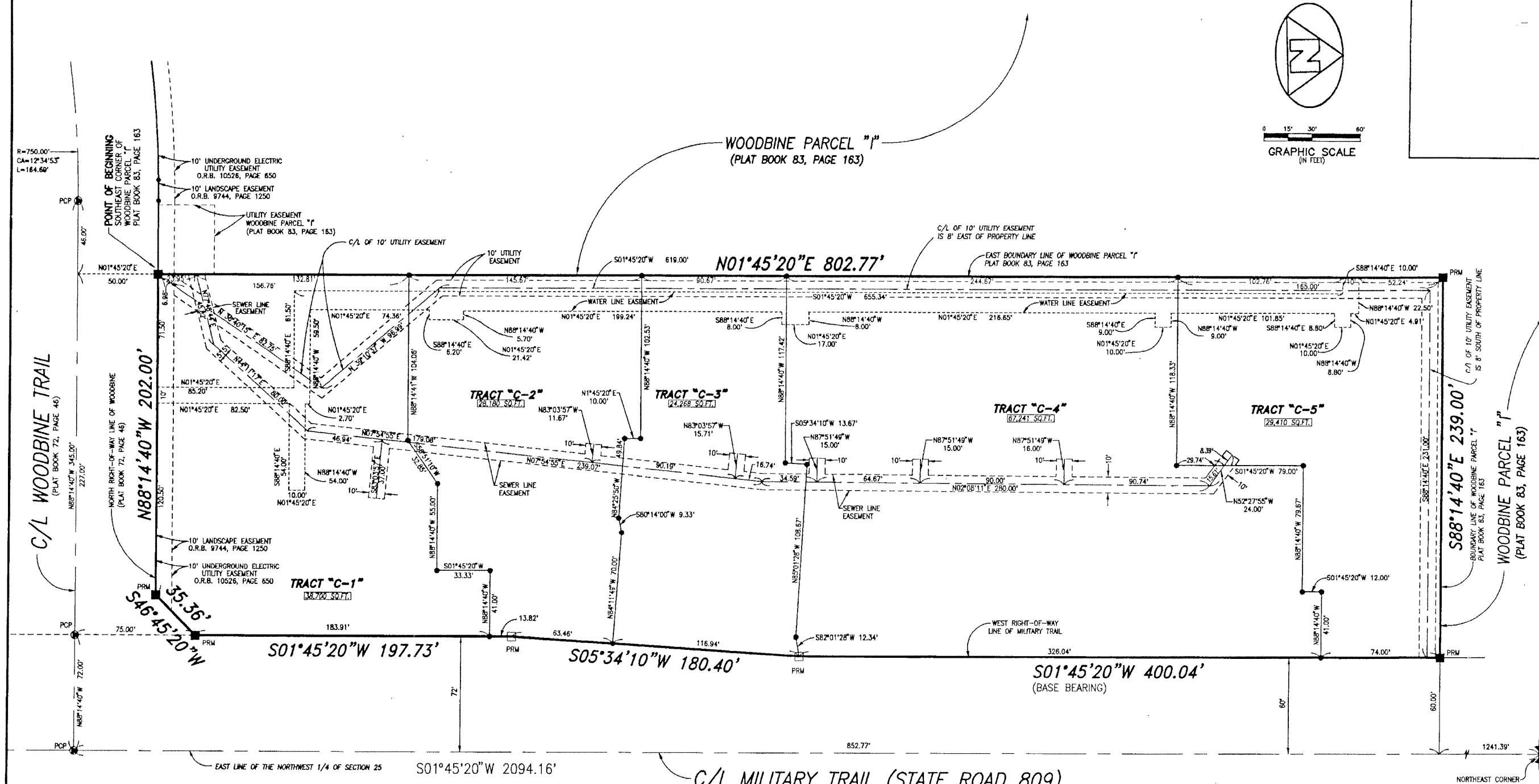


LYING IN THE NORTHWEST ONE-QUARTER OF SECTION 25, TOWNSHIP 42 SOUTH, RANGE 42 EAST, CITY OF RIVIERA BEACH, PALM BEACH COUNTY, FLORIDA.



0 15' 30' 60'  
GRAPHIC SCALE  
(IN FEET)



**SURVEYOR'S NOTES AND LEGEND:**

- 1. THE BASE BEARING AS SHOWN HEREON IS NORTH 01°45'20" EAST ALONG THE WEST RIGHT-OF-WAY LINE OF MILITARY TRAIL, AS SHOWN HEREON.
- DENOTES A FOUND PERMANENT REFERENCE MONUMENT (P.R.M.)
- DENOTES A SET #2424 PERMANENT REFERENCE MONUMENT (P.R.M.)
- ⊙ DENOTES A FOUND #2424 PERMANENT CONTROL POINT (P.C.P.)
- DENOTES TRACT CORNER MONUMENT POSITION
- O.R.B. = OFFICIAL RECORD BOOK
- C/L DENOTES A CENTERLINE
- SQ.FT. = SQUARE FEET
- CA = CENTRAL ANGLE
- L = LENGTH
- R = RADIUS

THIS INSTRUMENT WAS PREPARED BY WM. R. VAN CAMPEN, P.S.M., IN AND FOR THE OFFICES OF BENCH MARK LAND SURVEYING & MAPPING, INC., 4152 WEST BLUE HERON BOULEVARD, SUITE 121, RIVIERA BEACH, FLORIDA

**BENCH MARK LAND SURVEYING & MAPPING, INC.**  
 4152 W. BLUE HERON BOULEVARD • SUITE 121  
 RIVIERA BEACH • FLORIDA 33404  
 PHONE: (561) 848-2102 • LB. 2171 • FAX: (561) 844-9559  
 EMAIL: bmls@bmls.com WEB: http://members.ionline.com/~bmls

**RECORD PLAT**  
WOODBINE COMMONS  
COMMERCIAL CENTER PLAT

DATE: 3/01/00	NO. 8: P11.000MM
FILE: SH2REV.DWG	SCALE: 1" = 30'
SHEET: 2 OF 2	